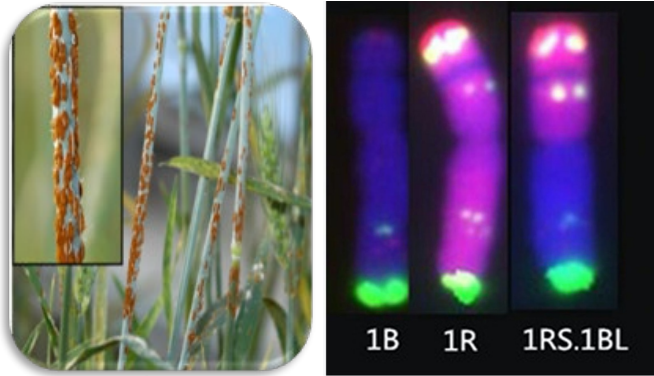


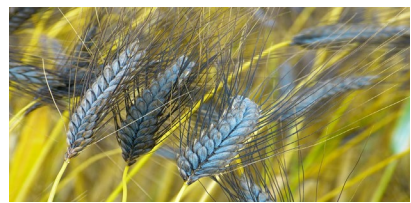
Systematic wheat research continues since 20th century



Genetics of wheat rust resistance is better understood.



1B 1R 1RS.1BL



AM panel- 293 entries

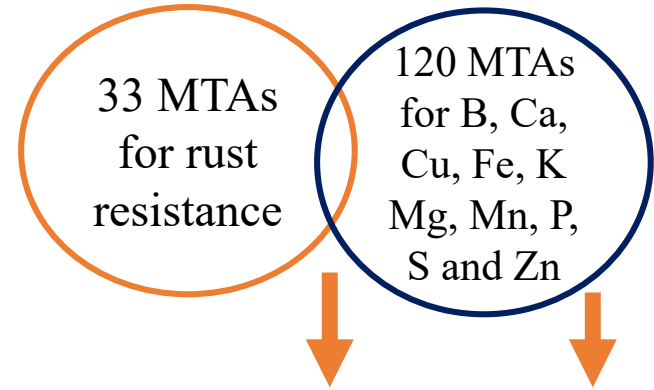
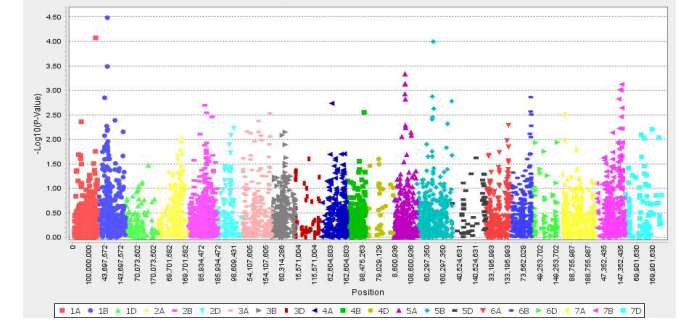


A collection of CIMMYT pre-breeding lines, synthetic wheat, *T. spelta*, emmer and derivatives of landraces

I. Genotyping with 90K assay and 13 known gene markers

II. Phenotyping at seedling and adult plant stage against three rust diseases

III. Estimation of mineral content in grain



Lines positive for alien segments (1RS:1BL, 2NS:2AS) accumulated more nutrients. *Lr34* and *Yr15* carrying lines were rich in Zn.

Seventeen major effect MTAs were detected for higher accumulation of micronutrients.